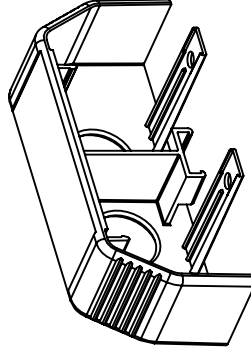
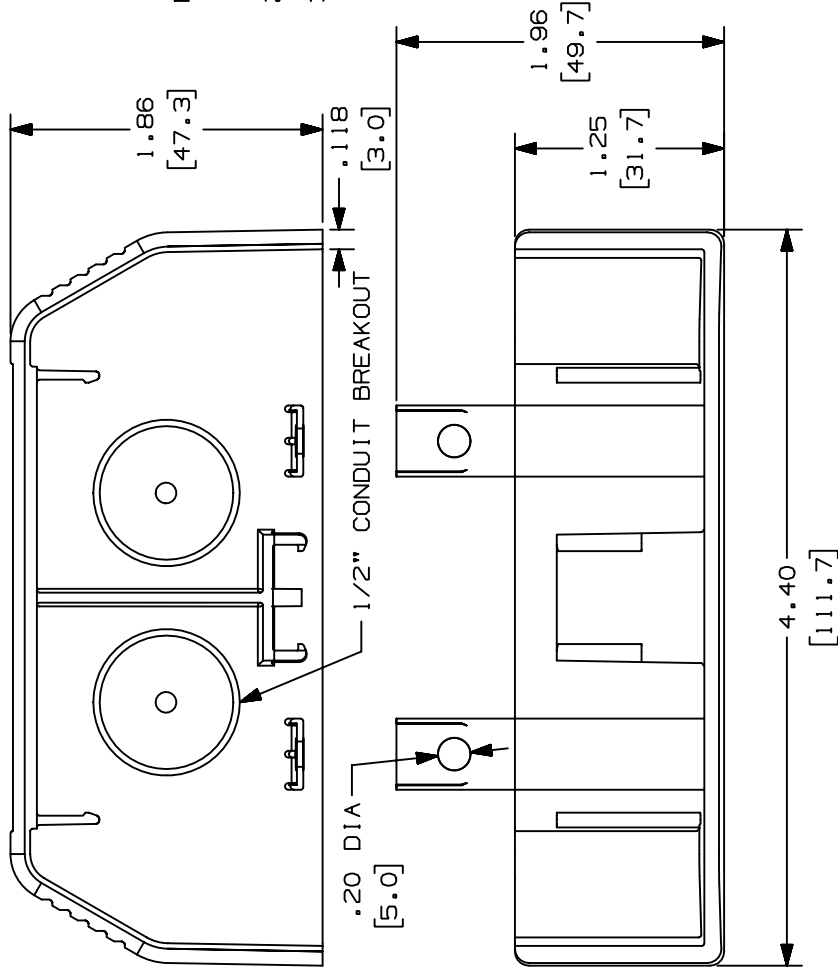


THIS COPY IS PROVIDED ON A RESTRICTED BASIS AND IS NOT TO BE USED IN ANY WAY DETRIMENTAL TO THE INTERESTS OF PANDUIT CORP.

PANDUIT P/N	WEIGHT
T70EC	0.97 LB/10 PCS. 447g /10 PCS.



- NOTES:
- SEE CURRENT CATALOG FOR ADDITIONAL PART SUFFIXES TO INDICATE COLOR AND OR PACKAGE QUANTITY.
  - THE END CAP COUPLING IS USED IN TERMINATING OR ENTERING T70 RACEWAY.
  - DIMENSIONS IN PARENTHESIS ARE IN METRIC.



CAD FILENAME/LAYERS D35541BW\_T70EC\_C\_01.PRT

PANDUIT  
CORP. TINLEY PARK, ILLINOIS

T-70 END CAP (T70EC)  
CUSTOMER DRAWING

UNLESS OTHERWISE SPECIFIED, DIMENSIONAL TOLERANCES ARE:  
(.X) ± (.XXX) ±.010(.3)  
(.XX) ±.03(.8) ANGLES ±

UNLESS OTHERWISE SPECIFIED, ALL DIMENSIONS ARE GIVEN IN INCHES, THIRD ANGLE PROJECTION.

SCALE	NONE
DRAWING NO.	35541-24
DWG SIZE	A

MAT'L:	PVC
DRAWN BY	JBA
DATE	09-10-96
CHECKED BY	CEF

ECN	CHK	CUST	SUP
35541-24	HIW	HIW	---
35541-24	CEF	CEF	---
35541-24	CEF	CEF	---

REV	DATE	BY	CHK	DESCRIPTION
-	-----	---	---	C. 0.97 LB (447g) WAS 0.89 LB (407g)
I	12-20-99	M50	HIW	B. PVC WAS ABS/POLYCARBONATE A. REVISED DRAWING TITLE
R	09-10-96	JBA	CEF	RELEASED TO PRODUCTION